



Ventilus[®] Pilot

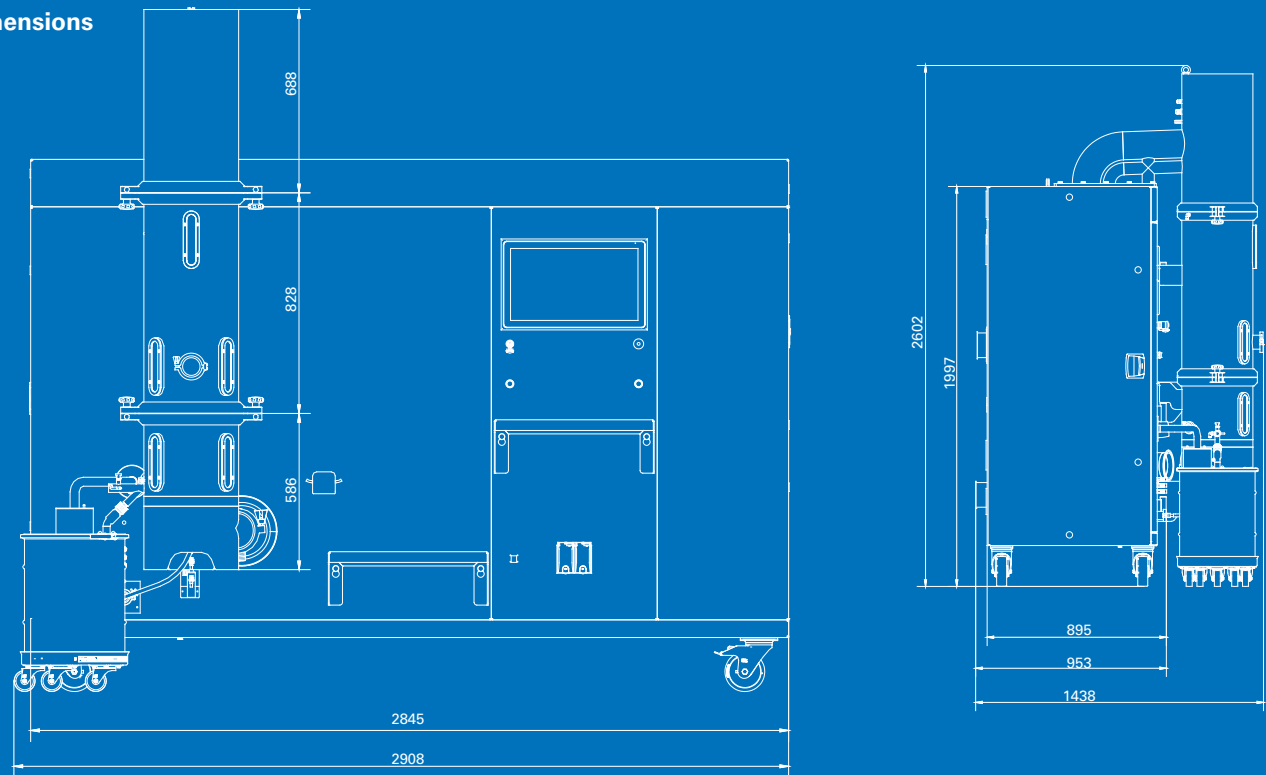
Equally suited for scale up or for manufacturing small batch sizes



	10 Liter product container	25 Liter product container
Max. batch size (kg, at 1g/cm ³)	10	31
Min. batch size (kg, at 1g/cm ³)	2.5	7,5
Product container inside \varnothing = booster \varnothing (mm)	250	350
Inlet air quantity (m ³ /h)	Max. 500	Max. 500
Spray air quantity (Nm ³ /h at 3.0 bar spray pressure)	20	20
Cooling water for dehumidification (glycol-free) (forward/return) (°C)	6° / 12°	6° / 12°
Power consumption (KW)	Max. 37	Max. 37
Particle size min. (μ m)	10	10
Particle size max. (mm)	2	2
Materials (product-contacted)	Stainless steel AISI 316I Borosilicate glass Filter media, plastic and seals FDA certified	

*Approximate data / Loading levels may change depending on tablet's shape and density

Dimensions



One step ahead in technology

The VENTILUS® technology was developed by Romaco Innojet for a broad array of applications involving small particles – from classic drying processes in combination with a high-shear mixer to innovative pellet or hot melt coating. Within these applications our customers acquire a standardised system solution which is simultaneously tailored to their individual needs.

The superiority of the VENTILUS® technology in terms of product quality, scalability and processing time helps cut the costs for users in the long term and improves their return on investment.



Global Service

Our qualified Romaco Service is globally available for you.

Remote Connection as standard feature assist you as alternative to long-distance travel.

Available on short delivery time!

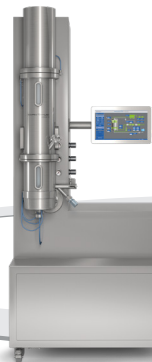
We offer equipment for rental and test equipment at our facilities
Contact us by email at innojet@romaco.com for more information



Also in our portfolio



TP G Lab
Granulator



Ventilus® Lab



TP R Lab
Tablet Coater



KTP 1X
R&D Tablet Press

Romaco Innojet Ventilus® Pilot Plant



Romaco.com

Plug and play – start your GMP manufacturing in seconds ...

The Innojet VENTILUS® Pilot Plant is the ideal and smartest solution as a mobile device or “Through the wall” installation to fulfill laboratory requirements for easy scale-up to production unit.

Intended for batch sizes from 4 to 25 L the VENTILUS® Pilot Plant has been developed as a sustainable concept in production. The VENTILUS® Pilot Plant is designed for operation with Hotmelt applications with a wide range of batch sizes with interchangeable product containers



Air Flow Bed Technology

- **Plug & play** compact system with built in Air Handling Unit and Exhaust Fan Filter
- Multi-processor FBD for **different applications**: Drying, Granulation, Coating, Multi Layering and Hot Melt
- **Manual or automatic** material loading and unloading
- **Orbiter®** air distributor plate, optimal control of product movement



Optimised Process Control

- Reliable scale-ups
- GMP design according to pharmaceutical regulations
- Process filter clearance by process air
- Individual **Fabric Filters** (Sepajet®)
- **Exchangeable Innojet Product Container (IPC)** with 10L and 25L for a working volume from 2.5L up to 31L
- **Quick-fit connections**, including bottom spray nozzle (**Rotojet®**)

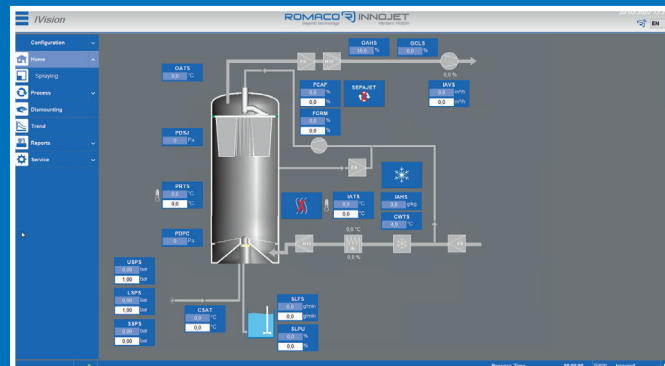


Shorter Batch Times

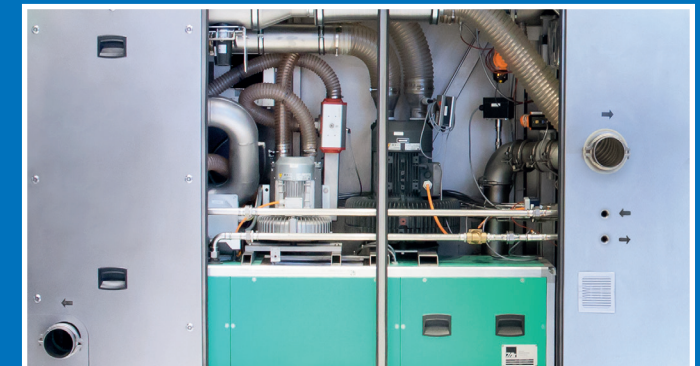
- **Easy scale-up** to production size equipment
- **User friendly software** control system and process data collection
- **Washing in Place system (WIP)** with cleaning recipe control with central batch data for export
- 21 CFR part 11 compliant with MES integration
- **Hot melt coating** processes with up to 85% shorter processing times with our unique Innojet hot melt device



Mobiles. Easy to be installed



Same control system as in lab or production size equipment, developed by Romaco Innojet



All in one solution